



Specs sheet of Full Cut Off LED Wall Pack series



1. It owns several patents, Funneled heat dissipation structure gives the wall lamp better heat dissipation effect.
2. Optical design of the LENS makes the light distribution apply to wall lamp.
3. The driver and the light source are separated, which makes the products easier to be assembled.
4. The design of the power supply box makes it convenient for customer to replace the driver.
5. It has a pretty appearance, The lamp fixture luminous efficiency can achieve 130lm/w.
6. High performance Meanwell & Sosen driver are applied on the lamp.
7. IP65 for wet location.
8. 5 years warranty.

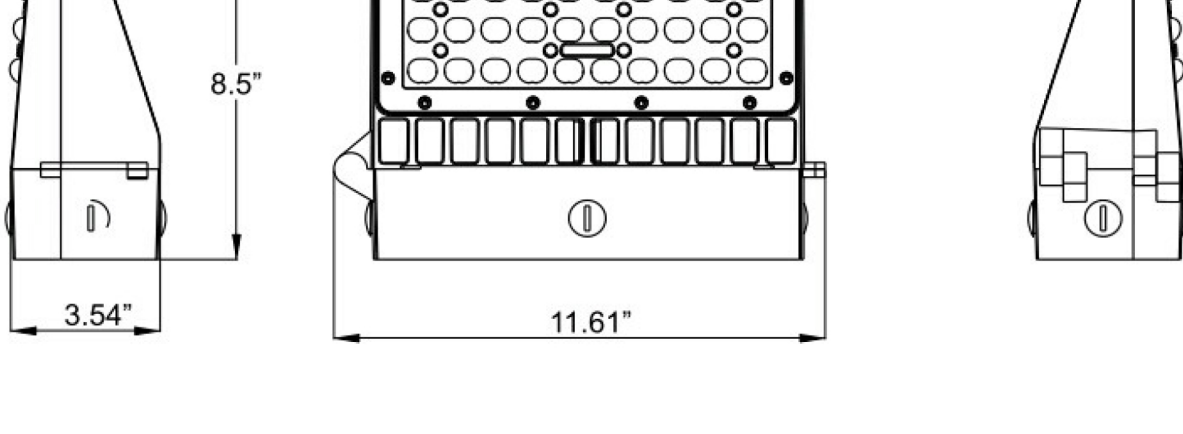


Advantage:

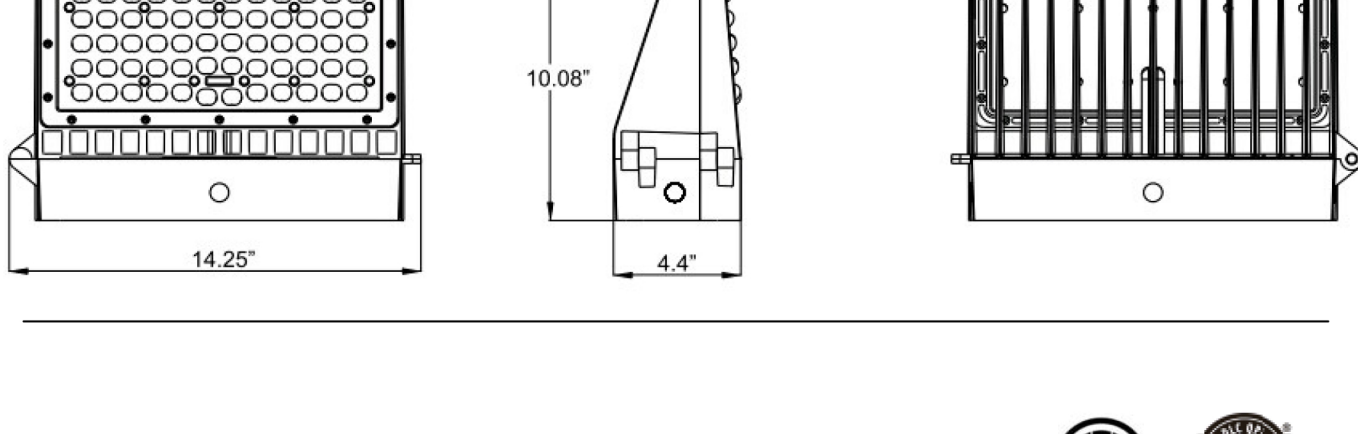
- ETL cETL DLC CE ROHS certificate
- Philips Lumileds Luxeon 3030 LED Chip, high CRI
- IP65 driver, Input voltage 100-277Vac
- 100°/140°/90°/140°/90°/120°/85°/135°/90°/120° lens angle
- Optional light-controlled and surge protection function
- No UV or IR in the beam
- Easy to install and operate
- Energy saving, Long lifespan
- Light is soft and uniform, Safe to eyes
- Fishbone style high efficiency heat sink.

Dimmension

WL90 series



WL112 series



Product Specifications

Product name	LED Wall Lamp
Part No	WL90 series: YB-WL90-W024, YB-WL90-W048, WL112 series: YB-WL112-W80, YB-WL112-W100, YB-WL112-W120, YB-WL112-W150
Dimension	WL90 series: 295*90*216mm , WL112 series: 362*112*256mm

Technical Characteristic

Color temperature	3000K , 3500K	4000K , 4500K	5000K
CRI	>70		
LED chip	Philips Lumileds Luxeon 3030		
Lumen Efficacy	130 LM/W		
Input Power	24w, 48w, 80w, 100w, 120w, 150w		
Viewing Angle	100°/140°/90°/140°/90°/120°/85°/135°/90°/120° lens angle		
Input Voltage	120-277Vac 50/60Hz		
Driver model	Meanwell Driver & Sosen Driver		
PFC	>0.95		
Waterproof Rating	IP65		

Materials

Operating Temperature	-40℃ TO 50℃
Operating Humidity	20%-90% RH
Storage Temperature	-30℃ TO 80℃
Storage Humidity	10%-95%
Application	Outdoor
Safety Certification	ETL, cETL, DLC, CE, ROHS
Warranty Time	5 Years



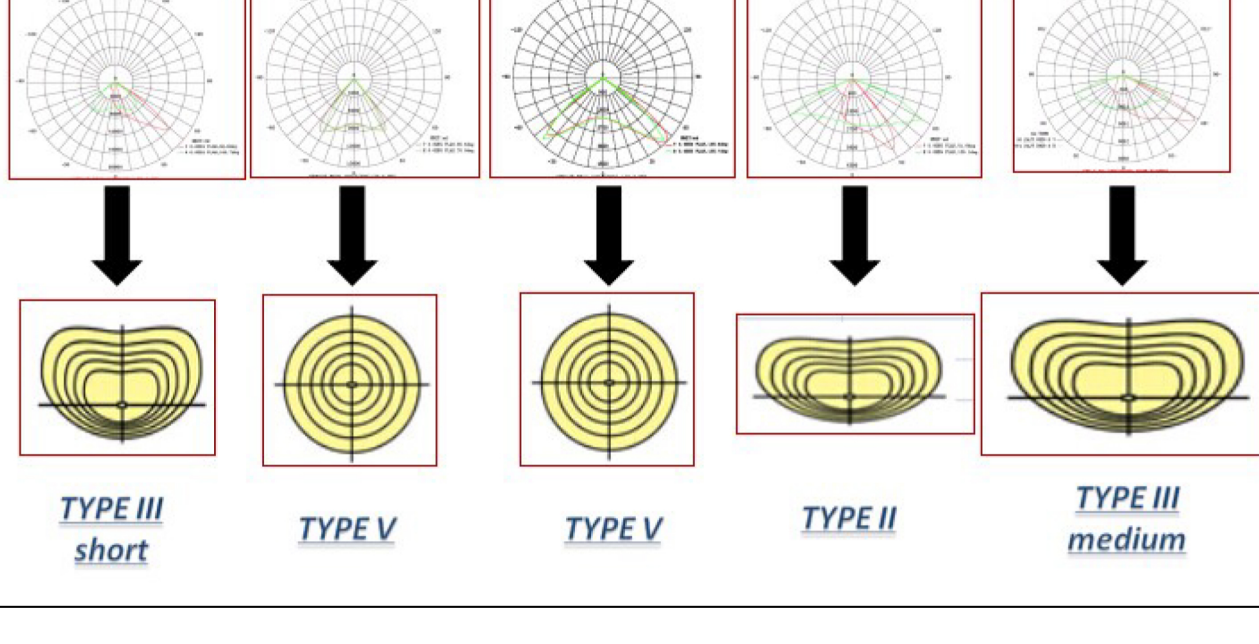
LED Wall Lamp :

The WL series of LED Wall Packs are the #1 answer for any commercial and industrial wall lighting. These Wall Packs are IP65 rated and dimmable with much of the same custom options. The WL series offers color temperatures 3000-5000k, multiple distribution lenses, and are photocell optional. The WL has a "full cut-off" design that keeps light pollution down to a minimum which helps keep your LED from flooding the surrounding area unnecessarily.

Full Cut-off Slim Design
High Performance LEDs
Reliable Driver with Extended Life Span
Effective Thermal Management
Easy Installation
Dark Bronze or White Finish

Lighting distribution advantage :

5 kinds of light distribution curve, Including TYPEII TYPEIII (Short, Medium) TYPEV



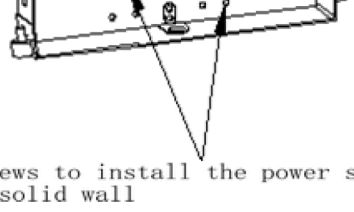
Advantage :

The power supply box is separately away from the heat sinker. So it's more easy to install and replace



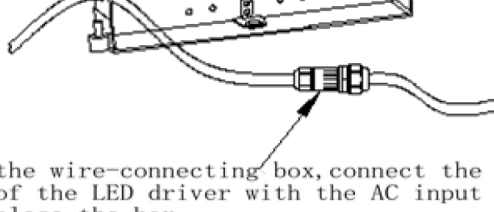
Instruction for Installation

1



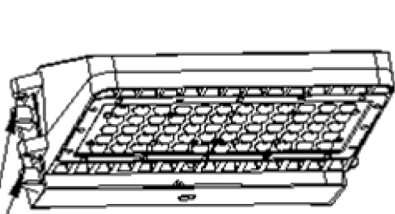
Using screws to install the power supply box onto the solid wall

2



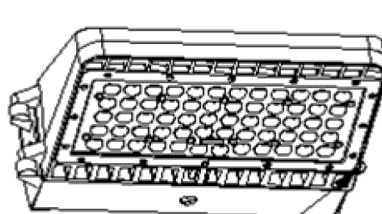
Open the wire-connecting box, connect the input wire of the LED driver with the AC input wire then close the box

3



Thrust the heat sinker body into the two holes

4



Close the body using screws and tighten them