

LED Parking Garage Specification

BBYR-PG230 Series



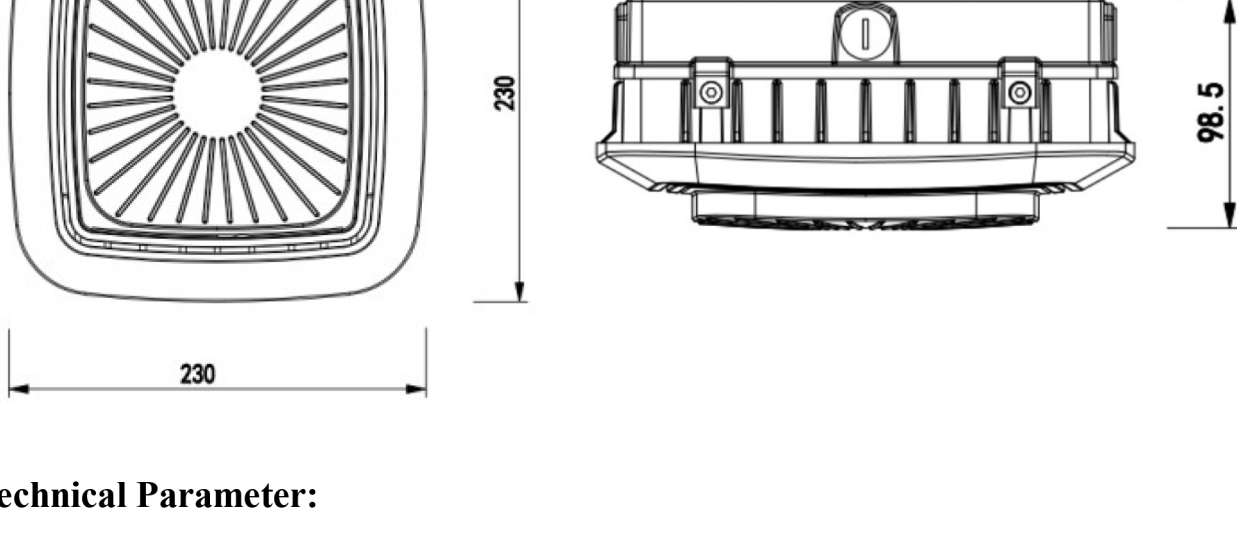
I . Application :

Parking garage, warehouse, parking buildings, stair way, interior canopies.

II . Features:

1. High performance, up to 130lm/W;
2. Super wide 160DEG beam angle, High transmittance optic PC lens;
3. Hanging type internal wiring, anti-slip design back cover, easy installation and high safety;
4. IP66 rated, suitable for wet locations;
5. 3-in-1 dimming, 1-10V, PWM, Resister;
6. Occupancy sensor available;
7. Operating temperature rating of - 40° F to 122° F (-40° C to 50° C)
8. White/Bronze housing powder coat finish, 5 years warranty

III. Product Size:



IV. Technical Parameter:

Model	System Power	CCT	CRI	Luminous Flux	Size (MM)	Certificate
YB-PG230-W30	30W	3000-5700K	≥70	>130LM/W	230*230*98.5	ETL,DLC,CE,ROHS
YB-PG230-W50	50W	3000-5700K	≥70	>130LM/W	230*230*98.5	ETL,DLC,CE,ROHS
Input Voltage: AC100~ 277V/305V AC180~ 528V IP66 IK08 LED Chips: 30W 84pcs 2835 50W 140pcs 2835						
Storage temperature: - 40 ~ + 65 °C						

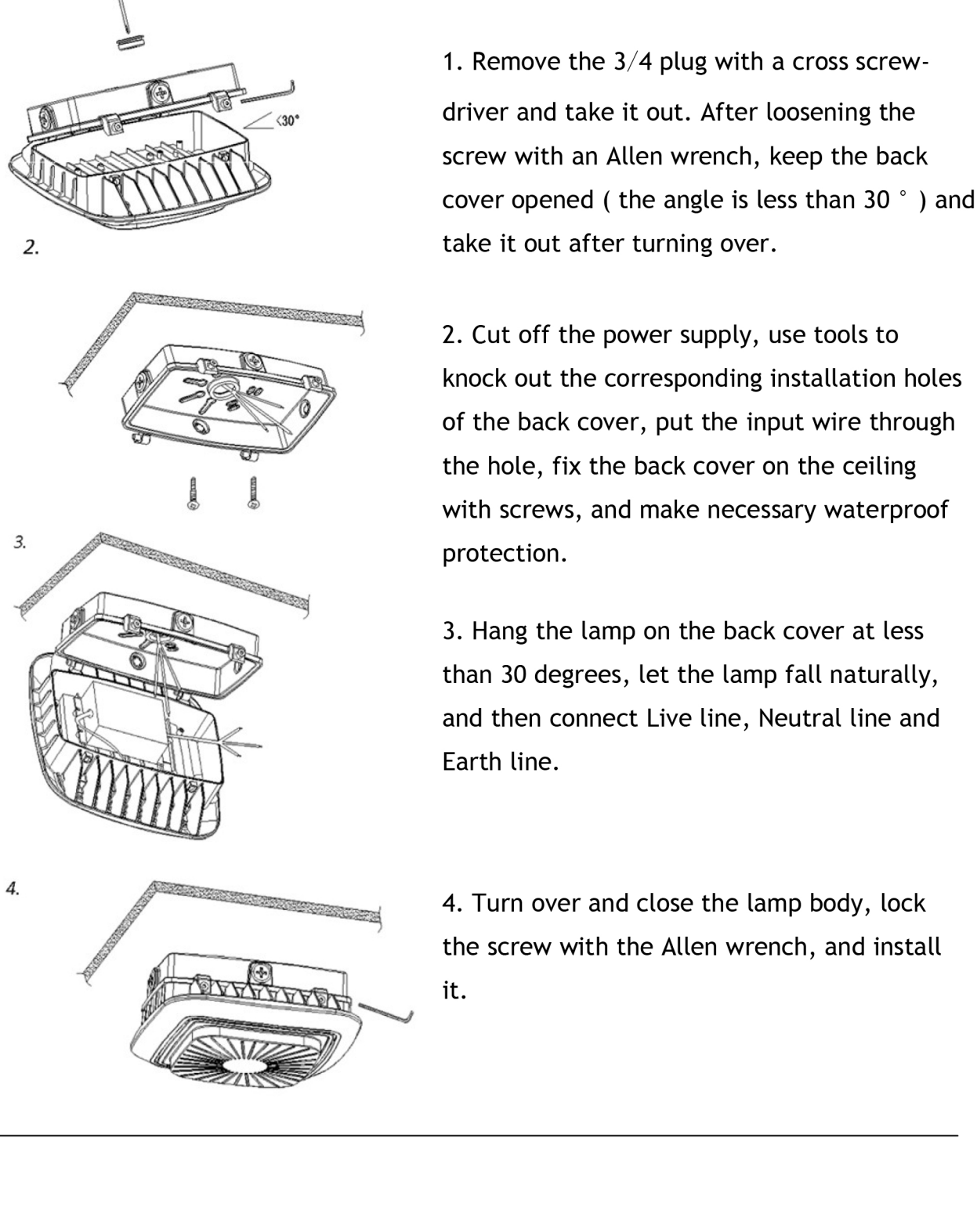
V . Beam Angle:

TYPE V 160°

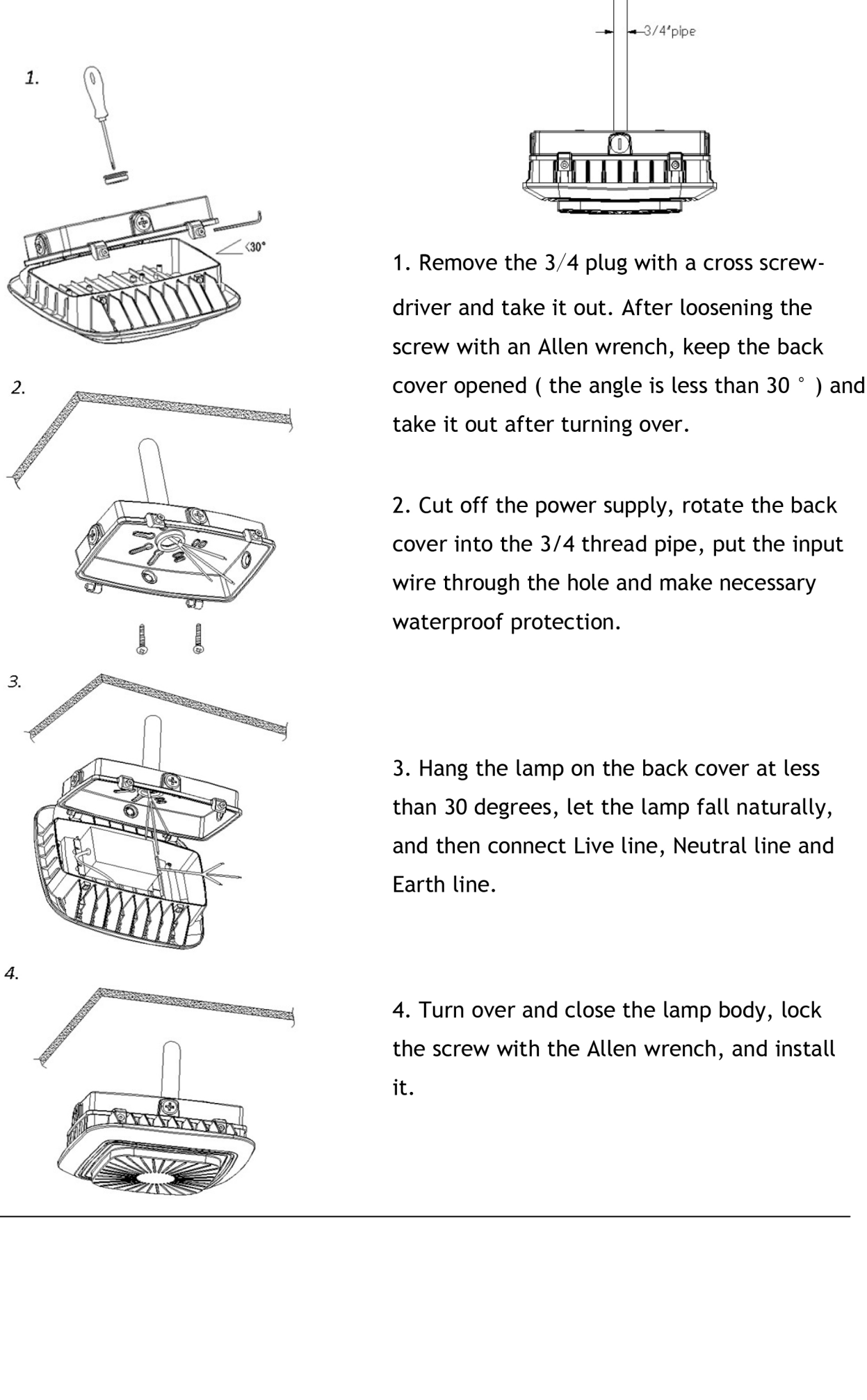


VI. Installation Instruction

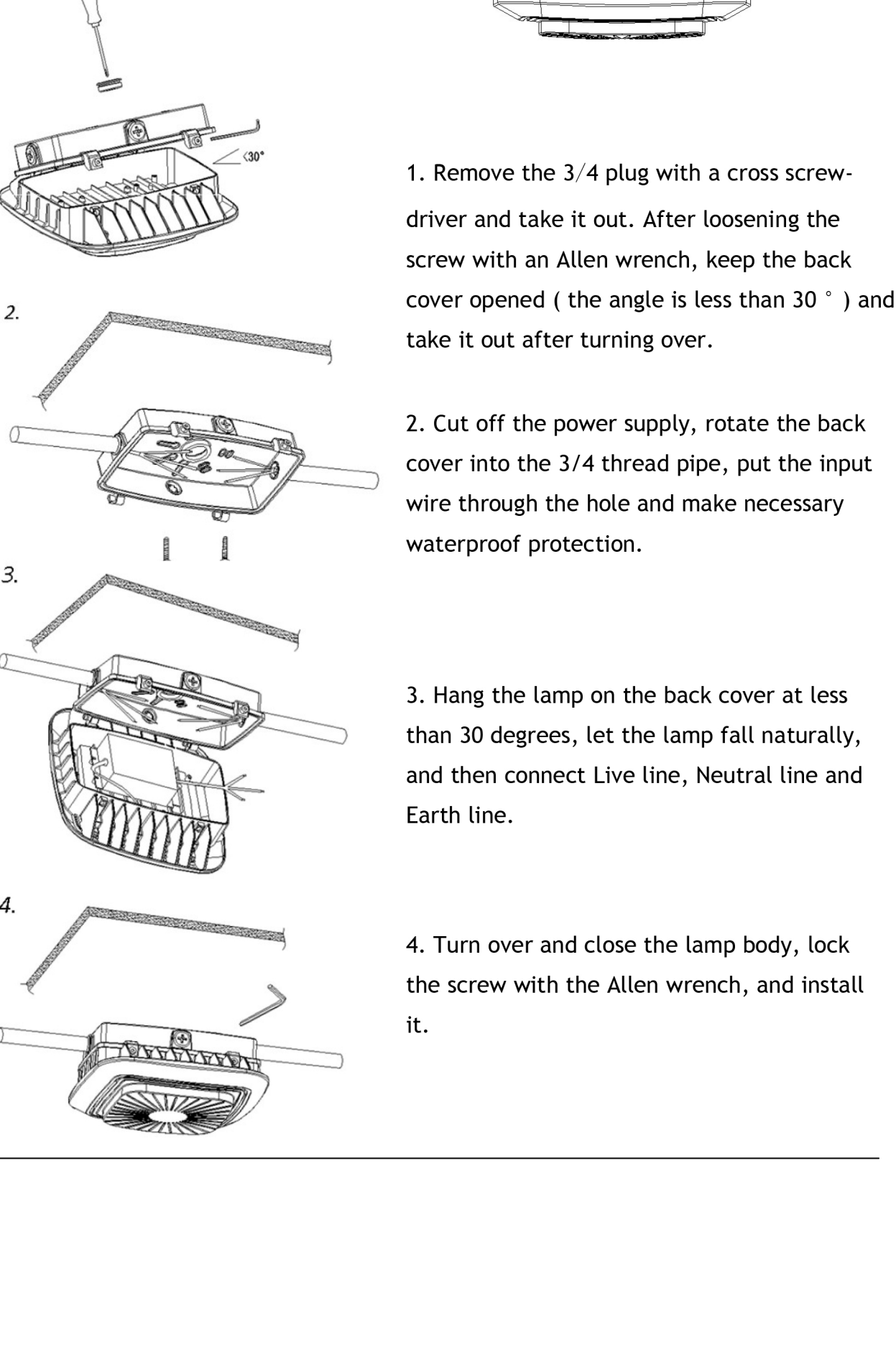
1. Surface Ceiling Mounting



2. Pendant Mounting

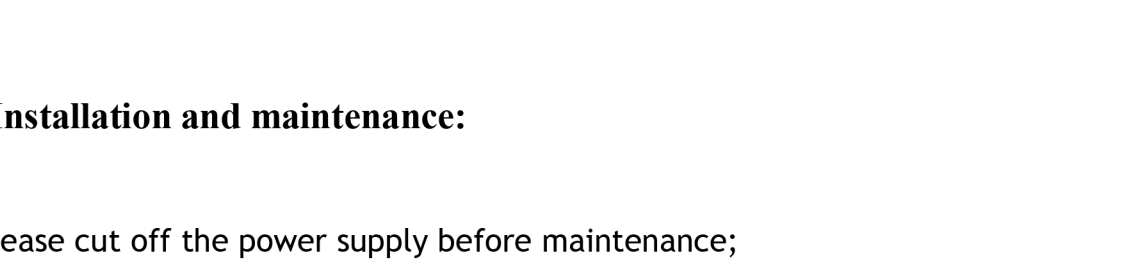


3. Horizontal Mounting



VII. Package Information:

Item	Inner box (MM)	G.W.	Outer carton (MM)	G.W.
YB-PG230-W30	255*135*260	2.4kg/5.3lbs	560*265*280	10.5kg/23.1lbs
YB-PG230-W50	255*135*260	2.5kg/5.5lbs	560*265*280	10.9kg/24.0lbs



VIII. Installation and maintenance:

1. Please cut off the power supply before maintenance;
2. Clean the lens surface regularly to maintain high light transmittance;
3. Clean the dust on the radiator regularly to keep high heat dissipation;
4. Not to clean it with water or corrosive solution, preferably wipe with dry cloth;
5. When installing or replacing the power supply, directly open the back cover with a screwdriver, and replace it with a new one;
6. Please make sure the input voltage matches the lamp before connecting to the power.