

LED Wall Pack Specification

YB-WL268-XX



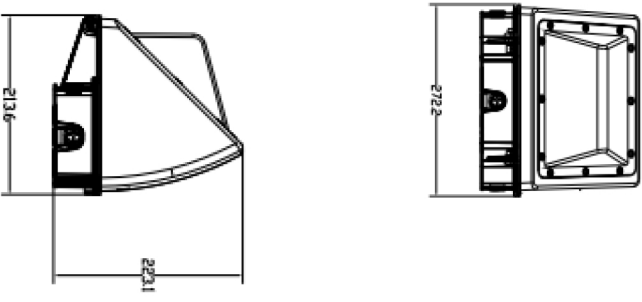
Application

Factory workshop, stadium, industrial lighting, architectural wall lighting.

Features

- 1. Including series of patents. Fresnel teeth lighting design for the PC cover, which is suitable for wall light distribution.
- 2. The LED driver and LED light source are separated, which is convenient for install and assemble.
- 3. LED driver is movable easily, which helps to replace LED driver. Nice appearance, using Philips LED.
- 4. Using high performance SOSEN Driver.
- 5. IP65

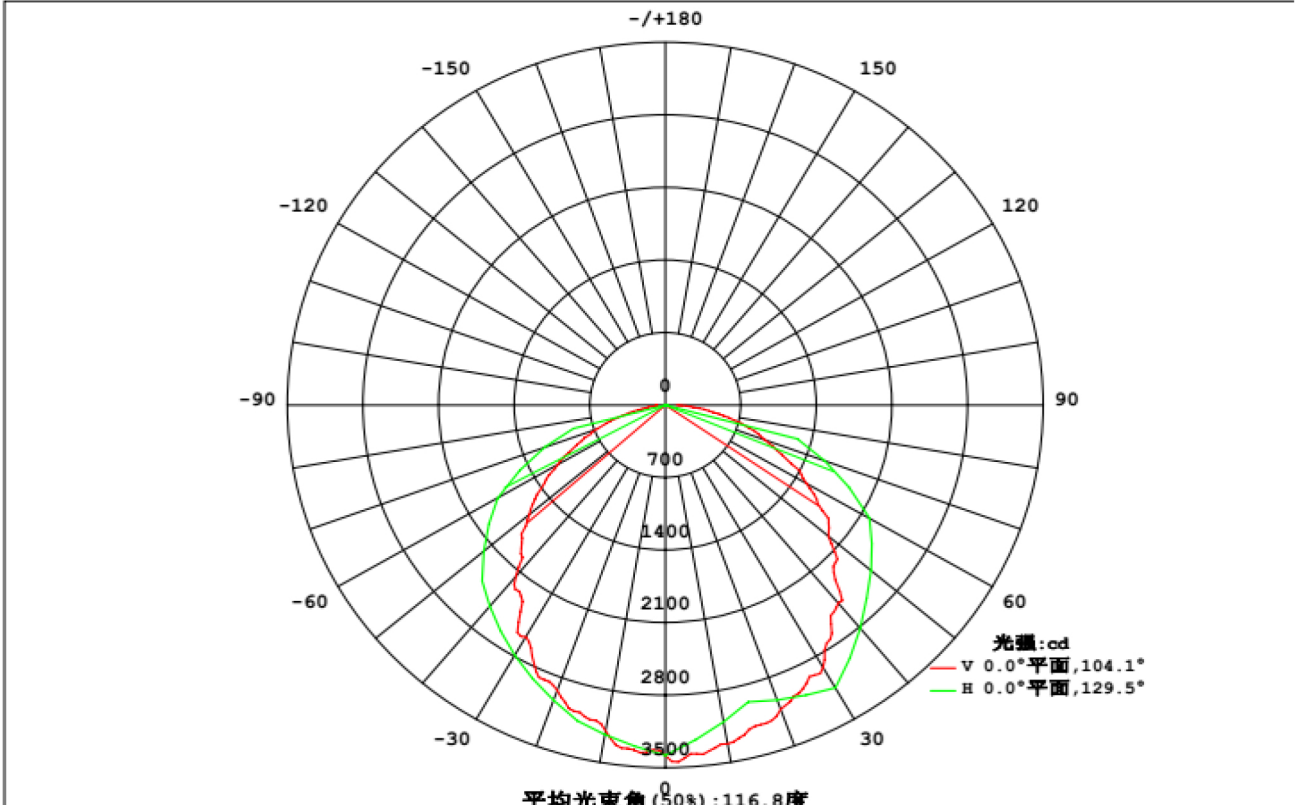
Dimension



Parameters

Model	CCT	CRI	Luminous Flux	Input Voltage	Power	Product size	Packaging size	N.W.
YB-WL268-W090	4700K~5300K	≥70	10118lm	100-277Vac	90 W	272*213*223 mm	325*280*300 mm	3.8Kg
YB-WL268-W070	4700K~5300K	≥70	8644lm	100-277Vac	70 W	272*213*223 mm	325*280*300 mm	3.6Kg
IP65								
2700-5300K								
PF>0.88								
Driver:Sosen								
Storage temperature: - 40 ~ 50°C								

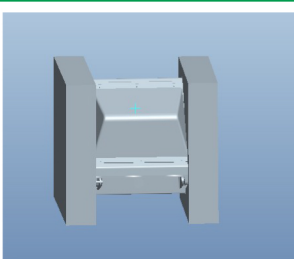
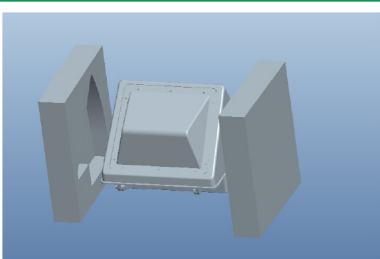
Light distribution curve



Installation

1. Connect the power cable
2. Open the screws
3. Put on the screws
4. Close the cover, screw it up

Package



Attentions for installation

- Cut off the power and make sure the wall can burden the weight of the lamp before install the lamp.
- Make sure the lamp correctly installed, in case of the lamp's dropping down.
- Do not cover the lamp with anything .
- Connect the ground line well.
- 5 years warranty.Products faults caused by separating, remodeling or incorrectly construction are not in the warranty area.